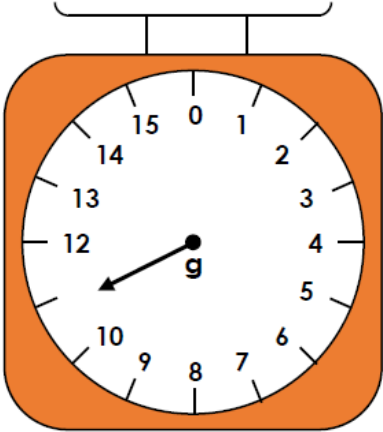
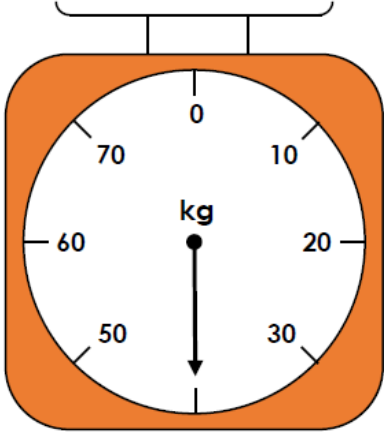


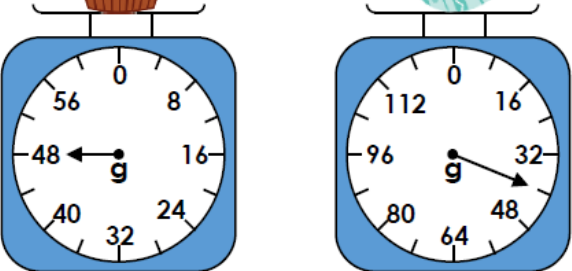


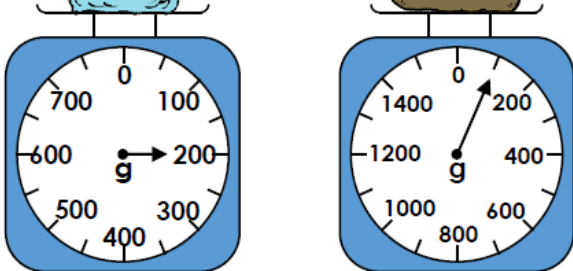
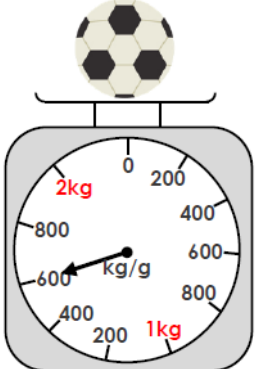
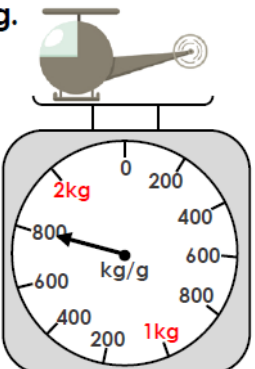


When you calculate the weight of an object you are measuring its Mass. The mass of an object can be measured in grams and Kilograms. $1\text{kg} = 1000\text{g}$

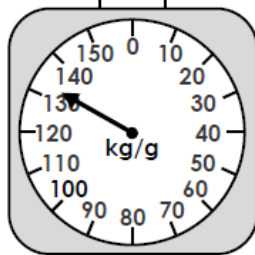
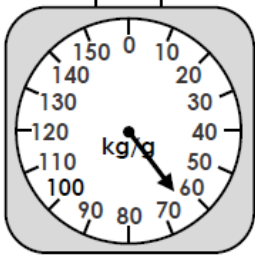
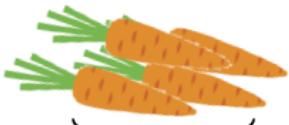
<p>1a. What mass is the arrow showing on this scale?</p> 	<p>1b. What mass is the arrow showing on this scale?</p> 
<p>5a. Which object is the heaviest?</p> <p>A  B </p> 	<p>5b. Which object is the lightest?</p> <p>A  B </p> 
<p>2a. True or false? The ball weighs 1kg and 500g.</p> 	<p>2b. True or false? The helicopter weighs 1kg and 800g.</p> 

- a. A cupcake weighs 55g, if two cupcakes weigh the same as an apple. How much would the apple weigh?
- b. A strawberry weighs 13g. A peach weighs three times as much. How much does the peach weigh?

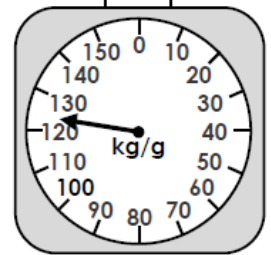
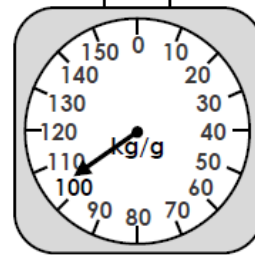
Tuesday 19th May 2020

L.O: Compare Mass

5a. True or false? The carrots are heavier than the keyboard.



5b. True or false? The drum is lighter than the pineapple.

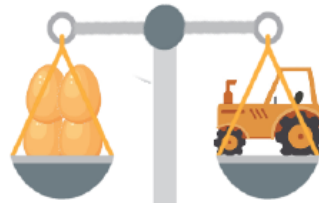


6a. Which object is the heaviest if one orange weighs 65g?



VF

6b. Which object is the lightest if one egg weighs 55g?



VF

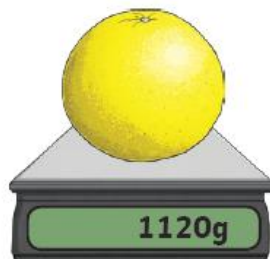
7a. Use < or > to compare the weights.

555g 5kg

7b. Use < or > to compare the weights.

2kg 225g

Sort these objects from lightest to heaviest.



lightest

heaviest

Wednesday 20th May 2020

L.O: Add and subtract Mass

To make adding and subtracting mass easier to work with, separate the kg and g first.

For example $1\text{kg } 500\text{g} + 2\text{kg } 300\text{g} =$

$1\text{kg} + 2\text{kg} = 3\text{kg}$

$500\text{g} + 300\text{g} = 800\text{g}$

$= 3\text{kg } 800\text{g}$

Part 1

1. $1\text{kg } 250\text{g} + 4\text{kg } 300\text{g} =$

2. $3\text{kg } 520\text{g} + 5\text{kg } 220\text{g} =$

3. $6\text{kg } 460\text{g} + 4\text{kg } 245\text{g}$

4. $1\text{kg} - 300\text{g} =$

5. $5\text{kg } 700\text{g} - 3\text{kg } 200\text{g} =$

6. $12\text{kg } 530\text{g} - 3\text{kg } 120\text{g} =$

Part 2

Zach the zookeeper is trying to work out how much animal food he has left in each bag.

How much food is left?



495g was used to feed the lemurs yesterday.

mass: _____.



1kg 860g was used to feed the lemurs yesterday.

mass: _____.



930g was used to feed the otters yesterday.

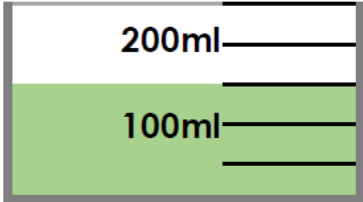
mass: _____.

Zach the zookeeper put all the leftover food in his wheelbarrow.

What was the total mass of food in the wheelbarrow? _____.


Capacity is a measure of how much liquid a container can hold. Capacity can be measured in ml and L (millilitres and Litres). 1L =1000ml.

5a. Complete the sentence.




The capacity is millilitres.

6a. True or false? There are 7L of liquid in the jug.

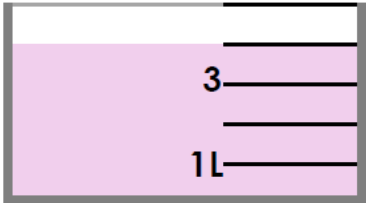


5b. Complete the sentence.

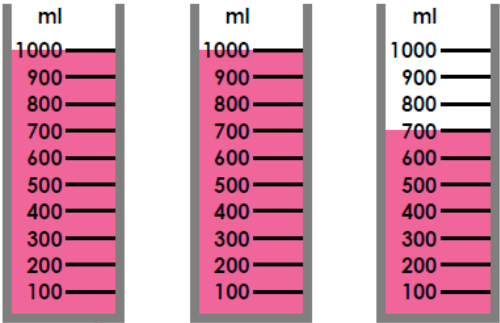


The capacity is litres.

6b. True or false? There are 4L of liquid in the container.

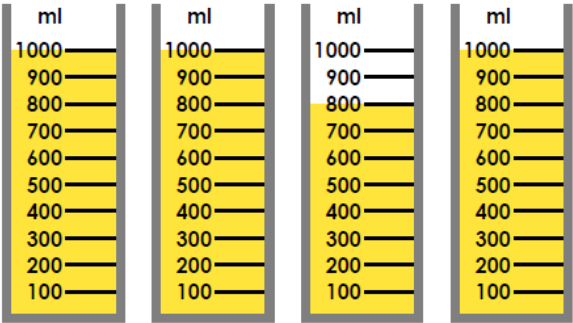


1a. Circle the capacity of the teapot.




3L and 700ml 2L and 700ml

1b. Circle the capacity of the honey pot.

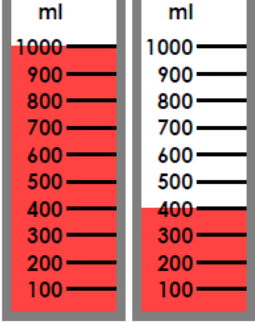


3L and 800ml 4L and 300ml


3a. True or false?



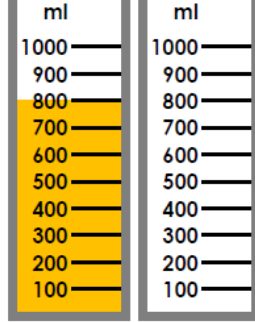
I have 1L and 300ml of cranberry juice for my family's breakfast.



3b. True or false?



I have 800ml of apple juice for my breakfast.



Friday 22nd May 2020

L.O: Add and Subtract Capacity

To make adding and subtracting capacity easier to work with, separate the L and ml first.

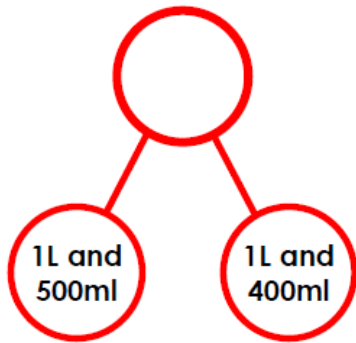
For example 5L 500ml - 2kg 300g =

$$5L - 2L = 3L$$

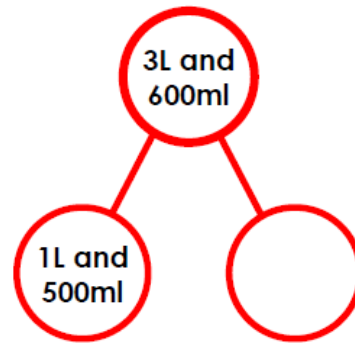
$$500ml - 300g = 200g$$

$$= 3L 200ml$$

2a. Complete the part whole model.



2b. Complete the part whole model.



3a. Find the difference between the containers:

	Container	Capacity
A and C	A	1L and 500ml
B and C	B	1L and 900ml
	C	1L and 400ml

3b. Find the difference between the containers:

	Container	Capacity
A and B	A	2L and 600ml
A and C	B	1L and 500ml
	C	2L and 300ml

4a. Which two of these containers would you need to have a total of 3L and 700ml?



1L and 300ml	1L and 200ml	2L and 400ml
--------------	--------------	--------------

4b. Which two of these containers would you need to have a total of 3L and 600ml?



2L and 300ml	200ml	3L and 400ml
--------------	-------	--------------

Answers

Monday

1. 11g
2. 40kg
3. Cupcake
4. Rice
5. False, it shows 1kg and 600g.
6. True

Part 2

1. 110g
2. 39g

Tuesday

1. False
2. False
3. Dinosaur
4. Banana
5. <
6. >
7. Orange, grapes, grapefruit, bananas and melon.

Wednesday

Part 1

1. $1\text{kg } 250\text{g} + 4\text{kg } 300\text{g} = 5\text{kg } 550\text{g}$
2. 8kg 740g
3. 10kg 705g
4. 700g
5. 2kg 500g
6. 9kg 410g

Part 2

1. 1kg 5g
2. 1kg 440g

3. 2kg 320g
4. 4kg 765g

Thursday

1. 150ml
2. 7L
3. False there is 6L in the jug
4. True
5. 2L 700ml
6. 3L 800ml
7. False there is 1L 400ml
8. True

Friday

1. 2L 900ml
2. 2L 100ml
3. A and C = 100ml B and C = 500ml
4. A and B = 1L 100ml A and C = 300ml
5. A and C
6. B and C