

## News and events from Northwold Primary School



### IN THIS ISSUE

- Message to Parents/Carers
- Diary Dates
- Reminder to Parents
- Vocab Lab
- Reading Corner
- Artist of the Week
- Nursery Spaces Available
- Comic Relief Gallery
- Northwold Primary Term Dates 2021 - 2022
- COVID Updates

### Week Beginning: 22.03.2021

Day	Event
Monday	World Water Day RSE Parents' Meeting – Year 1,5 and 3
Tuesday	RSE Parents' Meeting – Year 6,2 and 4 Parents' Evening - Online meetings <i>Tuesday 23<sup>rd</sup> March -3:30-4:30</i>
Wednesday	Parents' Evening - Online meetings <i>Wednesday 24<sup>th</sup> March -3:30-4:30</i>
Thursday	Inter School Spelling Be Championship - Online Event Parent Council Meeting at 9:00-10:00 Parents' Evening - Online meetings <i>Thursday 25<sup>th</sup> March - 3:30-7:00</i>
Friday	

Each meeting is for a duration of 10 minutes, so it is important that you join your meeting on time.

Thank you to all the parents who have returned the school's resources that were sent home during the lockdown period– chromebooks, reading books and workbooks. If you still have resources at home, please send them back to school as soon as possible.

A special thank you to all the parents who continue to adhere to the measures implemented to keep the school community safe during drop off and pick up times.

Please stay safe and have a lovely weekend.

Yours sincerely  
S. Goulbourne

Dear Parents/Carers,

I hope that you are all well and keeping safe. This was another successful week in which the children have settled and reengaged with learning.

Next week we will be having our Virtual Parents' Evening meetings over three evenings- *Tuesday 23<sup>rd</sup> (3:30-4:30), Wednesday 24<sup>th</sup> (3:30-4:30), and 25<sup>th</sup> (3:30-7:00)*. All parents should have selected a time slot for their meeting via Teachers2parents. Class teachers will be emailing a Google Meet link for the meeting.

Today you will receive your child's school report. During the parents' meeting, your child's class teacher will discuss their report, outlining the progress they have made so far during the Autumn and Spring Term and the missing components in their learning. The teachers will share strategies that will be used to close the gaps or achieve the missing components to ensure that they meet the composite aim for the year.

### School Office- New Opening Times

The school office opening hours are from 8:00am to 4:30pm daily. There is no one available in the office to take phone calls outside of these times.

## Reminders to parents

- Pupils who are sick and unwell should not come to school.
- Notify the school if your child is self-isolating or if they test positive for COVID-19.
- Lateral flow testing is available for all families. Please click on the link to get more information. (<https://hackney.gov.uk/coronavirus-support/#test>)
- Absence due to vaccination appointments will not affect your child's attendance and will be an authorised absence.

## Vocab Lab

**Laconic**- using very few words or concise to the point of seeming rude.

### Example

- 1.) Her **laconic** reply implied a lack of knowledge about the topic.
- 2.) His **laconic** reply implied rudeness.

Can you use **laconic** in your own sentences?

**Reading Corner- Something to listen to or read this week.**

### Story (Week 2)

**The Unlikely Adventures of Mabel Jones**

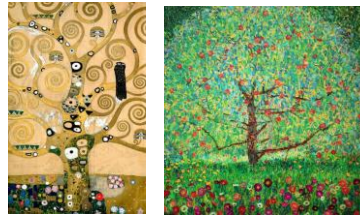
<https://www.thenational.academy/library/head-on-an-adventure-with-will-mabbitt>

## Diary Dates

22 <sup>nd</sup> March	World Water Day RSE Parents Meeting
23 <sup>rd</sup> March	RSE Parents Meeting <i>Parents' Evening -Online meetings 3:30-4:30</i>
24 <sup>th</sup> March	<i>Parents' Evening -Online meetings 3:30-4:30</i>
25 <sup>th</sup> March	Inter School Spelling Be Championship - Online Event Parent Council Meeting at 9:00-10:00 Parents' Evening - Online meetings 3:30-7:00
31 <sup>st</sup> March	Autism Awareness Day
1 <sup>st</sup> April	Last day of term- children will be dismissed at 2pm

## Artist of the Week

### Gustav Klimt



The objective is for children to find out more about the artist and create a piece of work similar to that of the artist. What material and techniques did the artist use? What subject matter did the artist depict? What was the artist's signature style?

## Nursery Spaces Available- Apply Now!

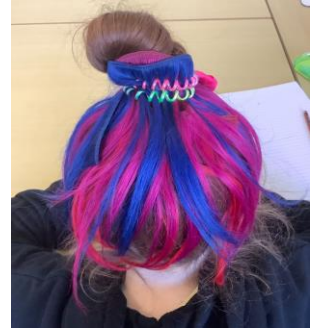
We still have spaces in Nursery for 2 and 3 year old children. Part time or full-time applications are welcomed. Please contact Mrs Bhagwandas for further information.

## Comic Relief Gallery

Today the children had Mad/Crazy Hair Day and contributed towards the fund raising for Comic Relief. Thank you for your support. We will notify you in next week's newsletter how much we raised for the charity. Please look at our Comic Relief Gallery to view some of the Mad/Crazy Hair styles created by our children.







### Northwold Primary Term Dates for 2021-2022

<b>Autumn Term</b>	<ul style="list-style-type: none"> <li>• INSET day - Wednesday 1<sup>st</sup> September</li> <li>• INSET day - Thursday 2<sup>nd</sup> September</li> <li>• Children return – Friday 3<sup>rd</sup> September</li> <li>• INSET day – Friday 22<sup>nd</sup> October</li> <li>• Half Term – Monday 25<sup>th</sup> October – Friday 29<sup>th</sup> October</li> <li>• Last day of term – Friday 17<sup>th</sup> December</li> <li>• School holidays - Monday 20<sup>th</sup> December - Monday 3<sup>rd</sup> January</li> </ul>
<b>Spring Term</b>	<ul style="list-style-type: none"> <li>• INSET day – Tuesday 4<sup>th</sup> January</li> <li>• Children return - Wednesday 5<sup>th</sup> January</li> <li>• Half term – Monday 14<sup>th</sup> February – Friday 18<sup>th</sup> February</li> <li>• Last day of term – Friday 1<sup>st</sup> April</li> <li>• School holidays – Monday 4<sup>th</sup> April – Monday 18<sup>th</sup> April</li> </ul>
<b>Summer Term</b>	<ul style="list-style-type: none"> <li>• INSET day - Tuesday 19<sup>th</sup> April</li> <li>• Children return – Wednesday 20<sup>th</sup> April</li> <li>• Half term – Monday 30<sup>th</sup> May – Friday 3<sup>rd</sup> June</li> <li>• Last day of term – Friday 22<sup>nd</sup> July</li> </ul>

### COVID Updates

#### How can you help keep everyone at Northwold Safe?

- ✓ **Keep 2m apart when dropping off and collecting children.**
- ✓ **Only one adult should enter the site to collect their child or children.**
- ✓ **Use the one-way system in place in the school.**
- ✓ **Wear a mask while you are on site (if you are unable to because of medical reasons, please maintain 2m distancing when communicating with staff).**
- ✓ **Contact the school immediately if someone in your household becomes unwell with COVID symptoms.**

### Book a Rapid Covid-19 test

#### Appointments must be booked in advance.

1 in 3 people with Covid-19 can spread the virus without having symptoms. To protect the NHS and keep you, your family and community safe test regularly with rapid tests, a minimum of once a week and ideally once every 3 days.

If there are no appointments listed, all slots are fully booked. Check back the next day for new availability.

Tests are available at the following locations:

- 18 Edward's Lane, Stoke Newington, N16 0JJ
- Geffrye Estate Community Hall, Falkirk Street, N1 6SD
- Mare Street, Maurice Bishop House, 17 Reading Lane, London E8 1DS
- Homerton Library, Homerton High St, Homerton, London E9 6AS

### Testing Centres in Hackney

#### In Hackney there are a number of testing sites:

- Dalston, Bentley Road Car Park, N1 4BZ (open 7 days a week 8am-8pm)
- Hackney Central, Mare Street, E9 6ND (open 7 days a week 8am-8pm)
- Homerton, Hackney Marshes Centre, E9 5PF (open 5 days a week Mon-Fri 9am-3.30pm)
- Stamford Hill, Rookwood Road test centre (former bus garage), London N16 6SD (open 7 days a week 8am-8pm)
- Stamford Hill, Yesodey Hatorah School, Egerton Road, N16 6UB

#### There are also 2 testing centres nearby that residents can use:

- Stamford Hill Primary Nursery Berkeley Rd, Haringey N15 6HD (7 days 8am-8pm)
- GuildHall Yard, City of London, EC2V 5AA (7 days 8am-8pm)

Local government-run test centres are not able to accept walk-up tests without an appointment.

